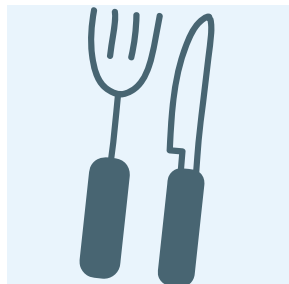




# Community Resource Guide

# MILFORD

## FOOD



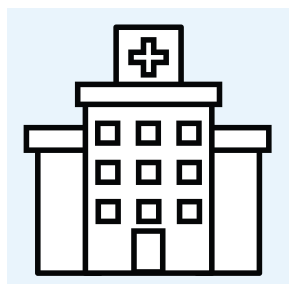
### **Daily Bread Food Pantry**

21 Exchange St  
Milford, MA 01757

(508) 478-4225

<http://www.dailybreadfoodpantry.org/>

## HEALTHCARE

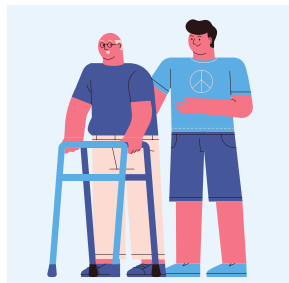


### **Edward M. Kennedy Community Health Center**

42 Cape Rd  
Milford, MA 01757

(800) 853-2288

## ELDER SERVICES



### **Town of Milford - Ruth Anne Bleakney Senior Center**

60 North Bow Street  
Milford, MA 01757

(508) 473-8334

<https://www.milfordma.gov/senior-center/faq/what-programs-and-services-does-senior-center-offer>

## SOCIAL SUPPORT



### **Safelink**

**(877) 785-2020**

*The Massachusetts statewide toll-free domestic violence hotline*

*\*Provides access to all DV shelters in the state\**

### **Voices Against Violence**

Toll Free Hotline (800) 593-1125

Emergency Hotline (508) 626-8686

## FAMILY RESOURCE CENTER

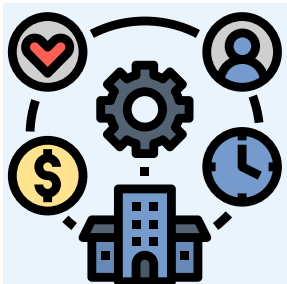


### **Milford Family Resource Center**

189 Main St  
Milford, MA 01757

(774) 268-3843

## MULTI-SERVICE AGENCIES



### **RCAP Solutions, Inc.**

191 May Street  
Worcester, MA 01602

(978) 630-6771

<http://www.rcapsolutions.org/>

## HOUSING SUPPORT



### **Central Massachusetts Housing Alliance**

6 Institute Road  
Worcester, MA 01609

(774) 243-3872

<https://www.cmhaonline.org/>